

MAY 1, 2011

The SEC has not approved or disapproved these securities or passed upon the adequacy of this prospectus. Any representation to the contrary is a criminal offense.

CLASS 2

Mutual Shares Securities Fund

PROSPECTUS

FRANKLIN TEMPLETON VARIABLE INSURANCE PRODUCTS TRUST



FRANKLIN TEMPLETON
INVESTMENTS

Franklin • Templeton • Mutual Series

Contents

<hr/>	FUND SUMMARIES	
<i>INFORMATION ABOUT THE FUND YOU SHOULD KNOW BEFORE INVESTING</i>	MS-S1	Mutual Shares Securities Fund
<hr/>	OVERVIEW	
	i	Franklin Templeton Variable Insurance Products Trust
<hr/>	FUND DETAILS	
<i>MORE INFORMATION ON INVESTMENT POLICIES, PRACTICES AND RISKS/FINANCIAL HIGHLIGHTS</i>	MS-D1	Mutual Shares Securities Fund
		Additional Information, All Funds
	1	Regulatory Update
	1	Dealer Compensation
	1	Portfolio Holdings
	1	Statements and Reports
	1	Administrative Services
		Distributions and Taxes
	2	Income and Capital Gains Distributions
	2	Tax Considerations
<hr/>	FUND ACCOUNT INFORMATION	
<i>INFORMATION ABOUT FUND TRANSACTIONS AND SERVICES</i>	3	Buying Shares
	3	Selling Shares
	3	Exchanging Shares
	4	Market Timing Trading Policy
	6	Involuntary Redemptions
	6	Fund Account Policies
	9	Questions
<hr/>	FOR MORE INFORMATION	
<i>WHERE TO LEARN MORE ABOUT EACH FUND</i>		Back Cover

[THIS PAGE INTENTIONALLY LEFT BLANK]

Mutual Shares Securities Fund

Investment Goal

Capital appreciation. Its secondary goal is income.

Fees and Expenses of the Fund

These tables describe the fees and expenses that you may pay if you buy and hold shares of the Fund. **The tables and the example do not include any fees or sales charges imposed by variable insurance contracts, qualified retirement plans or investment companies.** If they were included, your costs would be higher.

SHAREHOLDER FEES *(fees paid directly from your investment)*

	Class 2
Maximum Sales Charge (Load) Imposed on Purchases	N/A

ANNUAL FUND OPERATING EXPENSES
(expenses that you pay each year as a percentage of the value of your investment)

	Class 2
Management fees	0.60%
Distribution and service (12b-1) fees	0.25%
Other expenses	0.14%
Total annual Fund operating expenses	0.99%

Example

This Example is intended to help you compare the cost of investing in the Fund with the cost of investing in other mutual funds. The Example assumes that you invest \$10,000 in the Fund for the time periods indicated and then redeem all of your shares at the end of the period. The Example also assumes that your investment has a 5% return each year and that the Fund's operating expenses remain the same. Although your actual costs may be higher or lower, based on these assumptions your costs would be:

	1 Year	3 Years	5 Years	10 Years
Class 2	\$101	\$315	\$547	\$1,213

Portfolio Turnover

The Fund pays transaction costs, such as commissions, when it buys and sells securities (or "turns over" its portfolio). A higher portfolio turnover may indicate higher transaction costs. These costs, which are not reflected in annual fund operating expenses or in the

example, affect the Fund's performance. During the most recent fiscal year, the Fund's portfolio turnover rate was 32% of the average value of its portfolio.

Principal Investment Strategies

Under normal market conditions, the Fund invests primarily in equity securities (including securities convertible into, or that the investment manager expects to be exchanged for, common or preferred stock) of U.S. and foreign companies that the investment manager believes are available at market prices less than their value based on certain recognized or objective criteria (intrinsic value). Following this value-oriented strategy, the Fund invests primarily in undervalued securities (securities trading at a discount to intrinsic value). The equity securities in which the Fund invests are primarily common stock. To a lesser extent, the Fund also invests in merger arbitrage securities and distressed companies.

The Fund expects to invest a significant portion of its assets in foreign securities, which may include sovereign debt and participations in foreign government debt.

The Fund is not limited to pre-set maximums or minimums governing the size of the companies in which it may invest. However, the Fund currently invests the equity portion of its portfolio primarily to predominantly in companies with market capitalizations greater than \$5 billion, with a portion or significant amount in smaller companies.

The Fund may attempt, from time to time, to hedge (protect) against currency risks, largely using forward foreign currency exchange contracts and currency futures contracts (including currency index futures contracts) when, in the investment manager's opinion, it would be advantageous to the Fund to do so. The Fund may also, from time to time, attempt to hedge against market risk using a variety of derivatives.

Portfolio Selection

The manager employs a research driven, fundamental value strategy for the Fund. Investments are generally selected based on the manager's own analysis of the security's intrinsic value, including for equity securities, an analysis of book value, cash flow potential, long-term earnings and multiples of earnings. The manager examines each investment

separately and there are no set criteria as to specific value parameters, asset size, earnings or industry type.

Principal Risks

You could lose money by investing in the Fund.

Mutual fund shares are not deposits or obligations of, or guaranteed or endorsed by, any bank, and are not insured by the Federal Deposit Insurance Corporation, the Federal Reserve Board, or any other agency of the U.S. government.

Market The market value of securities owned by the Fund will go up and down, sometimes rapidly or unpredictably. A security's market value may be reduced by market activity or other results of supply and demand unrelated to the issuer. This is a basic risk associated with all securities. When there are more sellers than buyers, prices tend to fall. Likewise, when there are more buyers than sellers, prices tend to rise.

Generally, stocks have historically outperformed other types of investments over the long term. Individual stock prices, however, tend to go up and down more dramatically. A slower-growth or recessionary economic environment could have an adverse effect on the price of the various stocks held by the Fund.

Value Style Investing A value stock may not increase in price as anticipated by the investment manager if other investors fail to recognize the company's value and bid up the price, the markets favor faster-growing companies, or the factors that the investment manager believes will increase the price of the security do not occur.

Merger Arbitrage Securities and Distressed Companies A merger or other restructuring, or a tender or exchange offer, proposed or pending at the time the Fund invests in merger arbitrage securities may not be completed on the terms or within the time frame contemplated, resulting in losses to the Fund. Debt obligations of distressed companies typically are unrated, lower-rated, in default or close to default and are generally more likely to become worthless than the securities of more financially stable companies.

Foreign Securities Investing in foreign securities typically involves more risks than investing in U.S. securities, including risks related to currency exchange rates and policies, country or government specific issues, less favorable trading practices or regulation and greater price volatility. Certain of these risks also may apply to securities of U.S. companies with significant foreign operations.

Smaller and Midsize Companies Securities issued by smaller and midsize companies may be more volatile in price than those of larger companies, involve substantial risks and should be considered speculative. Such risks may include greater sensitivity to economic conditions, less certain growth prospects, lack of depth of management and funds for growth and development and limited or less developed product lines and markets. In addition, smaller companies may be particularly affected by interest rate increases, as they may find it more difficult to borrow money to continue or expand operations, or may have difficulty in repaying any loans.

Derivative Instruments The performance of derivative instruments depends largely on the performance of an underlying currency, security or index and such derivative instruments often have risks similar to their underlying instrument, in addition to other risks. Derivative instruments involve costs, may be volatile and illiquid, may give rise to leverage and may involve a small initial investment relative to the risk assumed. There may also be imperfect correlation between the value of the derivative and the underlying instrument. When used for hedging, the change in value of the derivative may also not correlate specifically with the currency, security or other risk being hedged. With over-the-counter derivatives, there is the risk that the other party to the transaction will fail to perform.

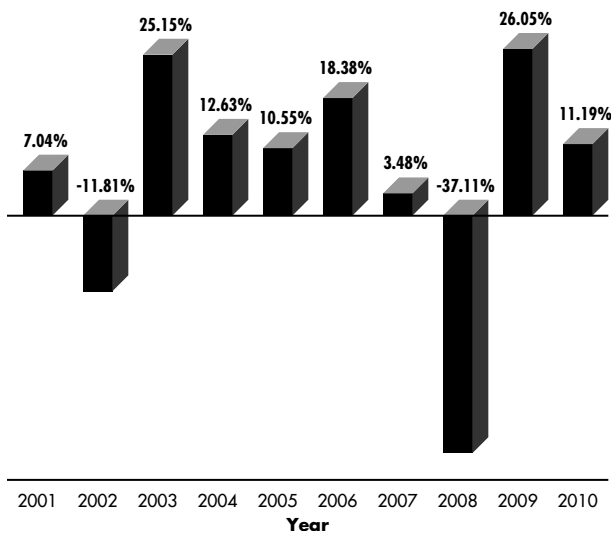
Management The Fund is subject to management risk because it is an actively managed investment portfolio. The Fund's investment manager applies investment techniques and risk analyses in making investment decisions for the Fund, but there can be no guarantee that these decisions will produce the desired results.

Performance

The following bar chart and table provide some indication of the risks of investing in the Fund. The bar chart shows changes in the Fund's performance from year to year for Class 2 shares. The table shows how the Fund's average annual returns for 1 year, 5 years, 10 years or since inception, as applicable, compare with those of a broad measure of market performance. The Fund's past performance is not necessarily an indication of how the Fund will perform in the future.

Performance reflects all Fund expenses but does not include any fees or sales charges imposed by variable insurance contracts, qualified plans or other mutual funds. If they had been included, the returns shown below would be lower. Investors should consult the variable insurance contract prospectus, or the disclosure documents for qualified plans or mutual funds for more information.

ANNUAL TOTAL RETURNS



Best Quarter:	Q2'09	16.20%
Worst Quarter:	Q4'08	-21.10%
As of March 31, 2011, the Fund's year-to-date return was 4.89% for Class 2.		

AVERAGE ANNUAL TOTAL RETURNS

For the periods ended December 31, 2010

	1 Year	5 Years	10 Years
Mutual Shares Securities Fund - Class 2	11.19%	1.55%	4.74%
S&P 500® Index (index reflects no deduction for fees, expenses or taxes)	15.06%	2.29%	1.41%

Investment Manager

Franklin Mutual Advisers, LLC (Franklin Mutual)

Portfolio Managers

PETER A. LANGERMAN

Chairman, President and Chief Executive Officer of Franklin Mutual and portfolio manager of the Fund since 2005.

F. DAVID SEGAL, CFA

Portfolio Manager of Franklin Mutual and portfolio manager of the Fund since 2002.

DEBBIE TURNER, CFA

Portfolio Manager of Franklin Mutual and portfolio manager of the Fund since 2001.

Purchase and Sale of Fund Shares

Shares of the Fund are sold to insurance companies' separate accounts (Insurers) to fund variable annuity or variable life insurance contracts and to qualified plans. Insurance companies offer variable annuity and variable life insurance products through separate accounts. Shares of the Fund may also be sold to other mutual funds, either underlying funds in a fund of funds or other structures. In periods of market volatility, Fund assets may decline significantly, causing total annual fund operating expenses to become higher than the numbers shown in the fees and expenses table above. In addition, Fund shares are held by a limited number of Insurers and, when applicable, funds of funds. Substantial withdrawals by one or more Insurers, qualified retirement plans or funds of funds could reduce Fund assets, causing total Fund expenses to become higher than the numbers shown in the fees and expenses table above.

The terms of the offering of interests in separate accounts are included in the variable annuity or variable life insurance product prospectus. The terms

of offerings of funds of funds and feeder funds are included in those funds' prospectuses. Investors should consult the variable contract prospectus, disclosure document or fund of funds prospectus for more information on fees and expenses imposed by variable insurance contracts, qualified retirement plans or investment companies.

Taxes

Because shares of the Fund are generally purchased through variable annuity contracts or variable life insurance contracts, the Fund's distributions (which the Fund expects, based on its investment objectives and strategies to consist of ordinary income, capital gains or some combination of both) will be exempt from current taxation if left to accumulate within the variable contract. You should refer to your contract prospectus for more information on these tax consequences.

Payments to Sponsoring Insurance Companies and Other Financial Intermediaries

The Fund or its distributor (and related companies) may pay broker/dealers or other financial intermediaries (such as banks and insurance companies, or their related companies) for the sale and retention of variable contracts which offer Fund shares and/or for other services. These payments may create a conflict of interest for a financial intermediary, or be a factor in the insurance company's decision to include the Fund as an investment option in its variable contract. For more information, ask your financial advisor, visit your financial intermediary's website, or consult the variable insurance contract prospectus or this Fund's prospectus.

Franklin Templeton Variable Insurance Products Trust

Overview

Franklin Templeton Variable Insurance Products Trust (the Trust) currently consists of multiple series (Funds), offering a wide variety of investment choices. Funds may be available in multiple classes: Class 1, Class 2, Class 3 and Class 4. The classes are identical except that Class 2, Class 3 and Class 4 each has a distribution plan and Class 3 may assess a redemption fee (see “Share Classes” under Fund Account Information). The Funds are not offered to the public; they are offered and sold only to: (1) insurance company separate accounts to serve as the underlying investment vehicle for variable contracts; (2) certain qualified plans; and (3) other mutual funds (funds of funds).

Investment Considerations

- The following give a general sense of the level of fund assets associated with a particular investment or strategy: “small portion” (less than 10%); “portion” (10% to 25%); “significant” (25% to 50%); “substantial” (50% to 66%); “primary” (66% to 80%); and “predominant” (80% or more). The percentages are not limitations unless specifically stated as such in this prospectus or in the Trust’s Statement of Additional Information (SAI).

Risks

- Fund shares are not deposits or obligations of, or guaranteed or endorsed by, any bank, and are not federally insured by the Federal Deposit Insurance Corporation, the Federal Reserve Board, or any other agency of the U.S. government. Fund shares involve investment risks, including the possible loss of principal.
- Because you could lose money by investing in a Fund, take the time to read each Fund description and consider all risks before investing.

Additional Information

More detailed information about each Fund, its investment policies, and its particular risks can be found in the SAI.

Investment Management

The Funds’ investment managers and their affiliates manage as of February 28, 2011, over \$693 billion in assets. In 1992, Franklin joined forces with Templeton, a pioneer in international investing. The Mutual Series organization became part of the Franklin Templeton organization four years later. In 2001, the Fiduciary Trust team, known for providing global investment management to institutions and high net worth clients worldwide, joined the organization. Today, Franklin Templeton Investments is one of the largest mutual fund organizations in the United States, and offers money management expertise spanning a variety of investment goals.

[THIS PAGE INTENTIONALLY LEFT BLANK]

Mutual Shares Securities Fund

Goals

The Fund's principal investment goal is capital appreciation. Its secondary goal is income.

Principal Investment Policies and Practices

Under normal market conditions, the Fund invests primarily in equity securities (including securities convertible into, or that the investment manager expects to be exchanged for, common or preferred stock) of U.S. and foreign companies that the investment manager believes are available at market prices less than their value based on certain recognized or objective criteria (intrinsic value). Following this value-oriented strategy, the Fund invests primarily in:

- **Undervalued Securities** Securities trading at a discount to intrinsic value.

And, to a lesser extent, the Fund also invests in:

- **Merger Arbitrage Securities** Securities of companies involved in restructurings (such as mergers, acquisitions, consolidations, liquidations, spin-offs, or tender or exchange offers) or that the investment manager believes are cheap relative to an economically equivalent security of another or the same company.
- **Distressed Companies** Securities of companies that are, or are about to be, involved in reorganizations, financial restructurings, or bankruptcy.

An equity security represents a proportionate share of the ownership of a company; its value is based on the success of the company's business and the value of its assets, as well as general market conditions. Common stocks, preferred stocks and convertible securities are examples of equity securities. Convertible securities generally are debt securities or preferred stock that may be converted into common stock after certain time periods or under certain circumstances. The Fund may invest in convertible securities without regard to the ratings assigned by the rating services.

In pursuit of its value-oriented strategy, the Fund is not limited to pre-set maximums or minimums governing the size of the companies in which it may invest. However, as a general rule, the Fund invests the equity portion of its portfolio primarily to predominantly in companies with market capitalizations (share price multiplied by the number of shares of common stock outstanding) greater than

\$5 billion, with a portion or significant amount in smaller companies.

While the Fund generally purchase securities for investment purposes, the investment manager may seek to influence or control management, or invest in other companies that do so, when the investment manager believes the Fund may benefit.

The Fund expects to invest significantly in foreign securities, which may include sovereign debt and participations in foreign government debt. A debt security obligates the issuer to the bondholders or creditors, both to repay a loan of money at a future date and generally to pay interest. The Fund may also invest up to 15% of its net assets in illiquid securities.

The Fund may also engage from time to time in an "arbitrage" strategy. When engaging in an arbitrage strategy, the Fund typically buys one security while at the same time selling short another security. The Fund generally buys the security that the investment manager believes is either cheap relative to the price of the other security or otherwise undervalued, and sells short the security that the investment manager believes is either expensive relative to the price of the other security or otherwise overvalued. In doing so, the Fund attempts to profit from a perceived relationship between the values of the two securities. The Fund generally engages in an arbitrage strategy in connection with an announced corporate restructuring, such as a merger, acquisition or tender offer, or other corporate action or event.

The Fund's investments in Distressed Companies typically involve the purchase of bank debt, lower-rated or defaulted debt securities, comparable unrated debt securities, or other indebtedness (or participations in the indebtedness) of such companies. Such other indebtedness generally represents a specific commercial loan or portion of a loan made to a company by a financial institution such as a bank. Loan participations represent fractional interests in a company's indebtedness and are generally made available by banks or other institutional investors. By purchasing all or a part of a company's direct indebtedness, the Fund, in effect, steps into the shoes of the lender. If the loan is secured, the Fund will have a priority claim to the assets of the company ahead of unsecured creditors and stockholders. The Fund

generally makes such investments to achieve capital appreciation, rather than to seek income.

For purposes of pursuing its investment goal, the Fund may, from time to time, enter into currency-related transactions involving certain derivative instruments, including currency forwards, and currency and currency index futures contracts. The use of derivative currency transactions may allow the Fund to obtain net long or net negative (short) exposure to selected currencies. The Fund may also enter into various other transactions involving derivatives, including put and call options on equity securities and swap agreements (which may include total return and credit default swaps). The use of these derivative transactions may allow the Fund to obtain net long or net negative (short) exposures to selected countries, currencies or issuers. The investment manager considers various factors, such as availability and cost, in deciding whether, when and to what extent to enter into derivative transactions.

The Fund may use any of the above currency techniques or other derivative transactions for the purposes of enhancing Fund returns, increasing liquidity, gaining exposure to particular instruments in more efficient or less expensive ways and/or hedging risks relating to changes in currency exchange rates, market prices and other market factors. By way of example, when the investment manager believes that the value of a particular foreign currency is expected to increase compared to the U.S. dollar, the Fund could enter into a forward contract to purchase that foreign currency at a future date. If at such future date the value of the foreign currency exceeds the then current amount of U.S. dollars to be paid by the Fund under the contract, the Fund will recognize a gain. When used for hedging purposes, a forward contract or other derivative instrument could be used to protect against possible declines in a currency's value where a security held or to be purchased by the Fund is denominated in that currency.

A forward contract is an obligation to purchase or sell a specific foreign currency at an agreed exchange rate (price) at a future date, which is individually negotiated and privately traded by currency traders and their customers in the interbank market.

A futures contract is a standard binding agreement between two parties to buy or sell a specified quantity

of an underlying instrument or asset, such as a specific security or currency, at a specified price at a specified later date that trade on an exchange. A "sale" of a futures contract means the acquisition of a contractual obligation to deliver the underlying instrument called for by the contract at a specified price on a specified date. A "purchase" of a futures contract means the acquisition of a contractual obligation to acquire the underlying instrument called for by the contract at a specified price on a specified date. The purchase or sale of a futures contract will allow the Fund to increase or decrease its exposure to the underlying instrument or interest rate. Although most futures contracts by their terms require the actual delivery or acquisition of the underlying instrument, some require cash settlement. The Fund may buy and sell futures contracts that trade on U.S. and foreign exchanges.

Swap agreements, such as total return swaps and credit default swaps, are contracts between the Fund and, typically, a brokerage firm, bank, or other financial institution (the swap counterparty) for periods ranging from a few days to multiple years. In a basic swap transaction, the Fund agrees with its counterparty to exchange the returns (or differentials in rates of return) earned or realized on a particular "notional amount" of underlying instruments. The notional amount is the set amount selected by the parties as the basis on which to calculate the obligations that they have agreed to exchange. The parties typically do not actually exchange the notional amount. Instead, they agree to exchange the returns that would be earned or realized if the notional amount were invested in given instruments or at given interest rates. For credit default swaps, the "buyer" of the credit default swap agreement is obligated to pay the "seller" a periodic stream of payments over the term of the agreement in return for a payment by the "seller" that is contingent upon the occurrence of a credit event with respect to an underlying reference debt obligation. As a "buyer" of the credit default swap, the Fund is purchasing the obligation of its counterparty to offset losses the Fund could experience if there was such a credit event. Generally, a credit event means bankruptcy, failure to timely pay interest or principal, obligation acceleration, or modified restructuring of the reference debt obligation. The contingent payment by the seller generally is the face amount of the debt obligation in exchange for the physical delivery of the reference

debt obligation or a cash payment equal to the then current market value of that debt obligation.

A call option gives the purchaser of the option, upon payment of a premium, the right to buy, and the seller the obligation to sell, the underlying instrument at the exercise price. Conversely, a put option gives the purchaser of the option, upon payment of a premium, the right to sell, and the seller of the option the obligation to buy, the underlying instrument at the exercise price.

The investment manager considers various factors, such as availability and cost, in deciding whether to use a particular derivative instrument or strategy. These techniques could result in a loss if the counterparty to the transaction does not perform as promised. Moreover, investors should bear in mind that the Fund is not obligated to actively engage in any derivative transactions.

Portfolio Selection

The investment manager employs a research driven, fundamental value strategy for the Fund. In choosing equity investments, the investment manager focuses on the market price of a company's securities relative to the investment manager's own evaluation of the company's asset value, including an analysis of book value, cash flow potential, long-term earnings, and multiples of earnings. Similarly, debt securities and other indebtedness, including loan participations, are generally selected based on the investment manager's own analysis of the security's intrinsic value rather

than the coupon rate or rating of the security. The investment manager examines each investment separately and there are no set criteria as to specific value parameters, asset size, earnings or industry type.

Commodity Exchange Act Exclusion

The Fund has claimed an exclusion from the definition of the term "commodity pool operator" under the Commodity Exchange Act (CEA), and, therefore, is not subject to registration or regulation as a commodity pool operator under the CEA.

Temporary Investments

The investment manager may keep a portion, which may be significant at times, of the Fund's assets in cash or invested in high-quality short-term, money market instruments, corporate debt, or direct or indirect U.S. and non-U.S. government and agency obligations, when it believes that insufficient investment opportunities meeting the Fund's investment criteria exist or that it may otherwise be necessary to maintain liquidity. For example, when prevailing market valuations for securities are high, there may be fewer securities available at prices below their intrinsic value. In addition, when the investment manager believes market or economic conditions are unfavorable for investors, the manager may invest up to 100% of the Fund's assets in U.S. or non-U.S. dollar denominated short-term investments, including cash or cash equivalents. In these circumstances, the Fund may be unable to pursue its investment goals.

Principal Risks

Market

The market value of securities owned by the Fund will go up or down, sometimes rapidly or unpredictably. Securities may decline in value due to factors affecting individual issuers, securities markets generally or particular industries or sectors within the securities markets. The value of a security may go up or down due to general market conditions which are not specifically related to a particular issuer, such as real or perceived adverse economic conditions, changes in the general outlook for revenues or corporate earnings, changes in interest or currency rates or adverse investor sentiment generally. They may also go up or down due to factors which affect an individual issuer or a particular industry or sector, such as changes in production costs and competitive conditions within an industry. During a general downturn in the securities markets, multiple asset classes may decline in value. When markets perform well, there can be no assurance that the Fund's securities will participate in or otherwise benefit from the advance.

Generally, stocks have historically outperformed other types of investments over the long term. Individual stock prices, however, tend to go up and down more dramatically. A slower-growth or recessionary economic environment could have an adverse effect on the price of the various stocks held by the Fund.

Value Style Investing

Value securities may not increase in price as anticipated by the investment manager, and may even decline further in value, if other investors fail to recognize the company's value, or favor investing in faster-growing companies, or if the events or factors that the investment manager believes will increase a security's market value do not occur.

The Fund's bargain-driven focus may result in the Fund choosing securities that are not widely followed by other investors. Securities that are considered "cheaply" priced also may include those of companies reporting poor earnings, companies whose share prices have declined sharply (such as growth companies that have recently stumbled to levels considered "cheap" in the manager's opinion), turnarounds, cyclical companies, or companies emerging from bankruptcy, all of which may have a higher risk of being ignored or rejected, and therefore undervalued, by the market or losing more value.

Merger Arbitrage Securities and Distressed Companies

A merger or other restructuring, or a tender or exchange offer, proposed or pending at the time the Fund invests in Merger Arbitrage Securities may not be completed on the terms or within the time frame contemplated, resulting in losses to the Fund. Debt obligations of Distressed Companies typically are unrated, lower-rated, in default or close to default. Also, securities of Distressed Companies are generally more likely to become worthless than the securities of more financially stable companies.

Foreign Securities

Investing in foreign securities typically involves more risks than investing in U.S. securities. Certain of these risks also may apply to securities of U.S. companies with significant foreign operations.

Currency exchange rates. Foreign securities may be issued and traded in foreign currencies. As a result, their market values in U.S. dollars may be affected by changes in exchange rates between such foreign currencies and the U.S. dollar, as well as between currencies of countries other than the U.S. For example, if the value of the U.S. dollar goes up compared to a foreign currency, an investment traded in that foreign currency will go down in value because it will be worth fewer U.S. dollars. The Fund accrues additional expenses when engaging in currency exchange transactions, and valuation of the Fund's foreign securities may be subject to greater risk because both the currency (relative to the U.S. dollar) and the security must be considered.

Currency management strategies. Currency management strategies may substantially change the Fund's exposure to currency exchange rates and could result in losses to the Fund if currencies do not perform as the investment manager expects. In addition, currency management strategies, to the extent that they reduce the Fund's exposure to currency risks, may also reduce the Fund's ability to benefit from favorable changes in currency exchange rates. There is no assurance that the investment manager's use of currency management strategies will benefit the Fund or that they will be, or can be, used at appropriate times. Furthermore, there may not be perfect correlation between the amount of exposure to a particular currency and the amount of securities in

the portfolio denominated in that currency. Investing in foreign currencies for purposes of gaining from projected changes in exchange rates, as opposed to hedging currency risks applicable to the Fund's holdings, further increases the Fund's exposure to foreign securities losses.

Political and economic developments. The political, economic and social structures of some foreign countries may be less stable and more volatile than those in the U.S. Investments in these countries may be subject to greater risks of internal and external conflicts, expropriation, nationalization of assets, foreign exchange controls (such as suspension of the ability to transfer currency from a given country), restrictions on removal of assets, political or social instability, military action or unrest, diplomatic developments, currency devaluations, foreign ownership limitations, and punitive or confiscatory tax increases. It is possible that a government may take over the assets or operations of a company or impose restrictions on the exchange or export of currency or other assets. Some countries also may have different legal systems that may make it difficult for the Fund to vote proxies, exercise shareholder rights, and pursue legal remedies with respect to its foreign investments. Diplomatic and political developments, including rapid and adverse political changes, social instability, regional conflicts, terrorism and war, could affect the economies, industries and securities and currency markets, and the value of the Fund's investments, in non-U.S. countries. These factors are extremely difficult, if not impossible, to predict and take into account with respect to the Fund's investments.

Trading practices. Brokerage commissions, withholding taxes, custodial fees, and other fees generally are higher in foreign markets. The policies and procedures followed by foreign stock exchanges, currency markets, trading systems and brokers may differ from those applicable in the U.S. with possibly negative consequences to the Fund. The procedures and rules governing foreign trading, settlement and custody (holding of the Fund's assets) also may result in losses or delays in payment, delivery or recovery of money or other property. Foreign government supervision and regulation of foreign securities markets and trading systems may be less than or different from government supervision in the U.S. and may increase the Fund's regulatory and compliance

burden and/or decrease the Fund's investor rights and protections.

Availability of information. Foreign issuers may not be subject to the same disclosure, accounting, auditing and financial reporting standards and practices as U.S. issuers. Thus, there may be less information publicly available about foreign issuers than about most U.S. issuers.

Limited markets. Certain foreign securities may be less liquid (harder to sell) and their prices may be more volatile than many U.S. securities. Illiquidity tends to be greater, and valuation of the Fund's foreign securities may be more difficult, due to the infrequent trading and/or delayed reporting of quotes and sales.

Smaller and Midsize Companies

While smaller and midsize companies may offer substantial opportunities for capital growth, they also involve substantial risks and should be considered speculative. Historically, smaller and midsize company securities have been more volatile in price than larger company securities, especially over the short term. Among the reasons for the greater price volatility are the less certain growth prospects of smaller and midsize companies, the lower degree of liquidity in the markets for such securities, and the greater sensitivity of smaller and midsize companies to changing economic conditions.

In addition, smaller and midsize companies may lack depth of management, be unable to generate funds necessary for growth or development, or be developing or marketing new products or services for which markets are not yet established and may never become established. Smaller companies may be particularly affected by interest rate increases, as they find it more difficult to borrow money to continue or expand operations, or may have difficulty in repaying any loans which are floating rate.

Credit

The Fund could lose money on a debt security if an issuer or borrower is unable or fails to meet its obligations, including failing to make interest payments and/or to repay principal when due. Changes in an issuer's financial strength, the market's perception of the issuer's financial strength or in a security's credit rating, which reflects a third party's

assessment of the credit risk presented by a particular issuer, may affect debt securities' value. The Fund may incur substantial losses on debt securities that are inaccurately perceived to present a different amount of credit risk by the market, the investment manager or the rating agencies than such securities actually do.

High-Yield Debt Securities

High-yield debt securities (including loans) and unrated securities of similar credit quality ("high-yield debt instruments") involve greater risk of a complete loss of the Fund's investment, or delays of interest and principal payments than higher-quality debt securities. Issuers of high-yield debt instruments are not as strong financially as those issuing securities of higher credit quality. High-yield debt instruments are generally considered predominately speculative by the applicable rating agencies as these issuers are more likely to encounter financial difficulties and are more vulnerable to changes in the relevant economy, such as a recession or a sustained period of rising interest rates, that could affect their ability to make interest and principal payments when due. If an issuer stops making interest and/or principal payments, payments on the securities may never resume. These instruments may be worthless and the Fund could lose its entire investment.

The prices of high-yield debt instruments fluctuate more than higher-quality securities. Prices are especially sensitive to developments affecting the issuer's business or operations and to changes in the ratings assigned by rating agencies. In addition, the entire high-yield debt market can experience sudden and sharp price swings due to changes in economic conditions, stock market activity, large sustained sales by major investors, a high-profile default, or other factors. Prices of corporate high-yield debt instruments often are closely linked with the company's stock prices and typically rise and fall in response to factors that affect stock prices.

High-yield debt instruments are generally less liquid than higher-quality securities. Many of these securities are not registered for sale under the federal securities laws and/or do not trade frequently. When they do trade, their prices may be significantly higher or lower than expected. At times, it may be difficult to sell these securities promptly at an acceptable price, which may limit the Fund's ability to sell securities in response

to specific economic events or to meet redemption requests. As a result, high-yield debt instruments generally pose greater illiquidity and valuation risks.

Unrated Debt Securities

The Fund is also subject to risks when investing in securities or issuers for which credit ratings have not been published. Unrated debt securities determined by the investment manager to be of comparable quality to rated securities which the Fund may purchase may pay a higher interest rate than such rated debt securities and be subject to a greater risk of illiquidity or price changes. Less public information is typically available about unrated securities or issuers.

Derivative Instruments

The performance of derivative instruments depends largely on the performance of an underlying instrument or index and such derivative instruments often have risks similar to their underlying instrument in addition to other risks. Derivative instruments involve costs, may be volatile, and may involve a small initial investment relative to the risk assumed. Their successful use will usually depend on the investment manager's ability to accurately forecast movements in the market relating to the underlying instrument. Should a market or markets, or prices of particular classes of investments move in an unexpected manner, especially in unusual or extreme market conditions, the Fund may not achieve the anticipated benefits of the transaction, and it may realize losses, which could be significant. If the investment manager is not successful in using such derivative instruments, the Fund's performance may be worse than if the investment manager did not use such derivative instruments at all. To the extent that the Fund uses such instruments for hedging purposes, there is the risk of imperfect correlation between movements in the value of the derivative instrument and the value of the underlying investment or other asset being hedged. There is also the risk, especially under extreme market conditions, that an instrument, which usually would operate as a hedge, provides no hedging benefits at all.

Use of these instruments could also result in a loss if the counterparty to the transaction (with respect to OTC instruments, swap agreements and forward currency contracts) does not perform as promised,

including because of such counterparty's bankruptcy or insolvency. This risk may be heightened during volatile market conditions. Other risks include the inability to close out a position because the trading market becomes illiquid (particularly in the OTC markets) or the availability of counterparties becomes limited for a period of time. In addition, the presence of speculators in a particular market could lead to price distortions. To the extent that the Fund is unable to close out a position because of market illiquidity, the Fund may not be able to prevent further losses of value in its derivatives holdings and the Fund's liquidity may be impaired to the extent that it has a substantial portion of its otherwise liquid assets marked as segregated to cover its obligations under such derivative instruments. The Fund may also be required to take or make delivery of an underlying instrument that the investment manager would otherwise have attempted to avoid. Some derivatives can be particularly sensitive to changes in interest rates or other market prices. Investors should bear in mind that, while the Fund intends to use derivative strategies on a regular basis, it is not obligated to actively engage in these transactions, generally or in any particular kind of derivative, if the investment manager elects not to do so due to availability, cost or other factors.

The use of derivative strategies may also have a tax impact on the Fund. The timing and character of income, gains or losses from these strategies could impair the ability of the investment manager to utilize derivatives when it wishes to do so.

Liquidity

Liquidity risk exists when the market for particular securities or types of securities are or become relatively illiquid so that the Fund is unable or it becomes more difficult for the Fund to sell the security at the price at which the Fund has valued the security. Illiquidity may result from political, economic or issuer specific events or overall market disruptions. Securities with reduced liquidity or that become illiquid involve greater risk than securities with more liquid markets. Market quotations for such securities may be volatile

and/or subject to large spreads between bid and ask prices. Reduced liquidity may have an adverse impact on market price and the Fund's ability to sell particular securities when necessary to meet the Fund's liquidity needs or in response to a specific economic event.

Management

The Fund is actively managed and could experience losses if the investment manager's judgment about markets, interest rates or the attractiveness, relative values, liquidity, or potential appreciation of particular investments made for the Fund's portfolio prove to be incorrect. There can be no guarantee that these techniques or the investment manager's investment decisions will produce the desired results. Additionally, legislative, regulatory, or tax developments may affect the investment techniques available to the investment manager in connection with managing the Fund and may also adversely affect the ability of the Fund to achieve its investment goal.

Short Sales

In a short sale of a security, the Fund sells a security it does not own and must borrow the security to deliver it to the purchaser. The Fund then later buys the same security in the market in order to return it to the lender. The Fund may not always be able to close out a short position at a particular time or at an acceptable price. A lending broker may request the borrowed stocks be returned to it on short notice, at a time when, in order to return them, the Fund may have to buy the borrowed stocks at an unfavorable price. If this occurs at a time when other short sellers of the same stock also want to close out their positions, a "short squeeze" can occur. A short squeeze occurs when demand is greater than supply for the stock sold short. A short squeeze makes it more likely that the Fund will have to cover its short sale by buying borrowed stocks at an unfavorable price. If that happens, the Fund will lose some or all of the potential profit from, or even incur a loss as a result of, the short sale.

More detailed information about the Fund, its policies and risks can be found in the Fund's SAI.

Management

Franklin Mutual Advisers, LLC (Franklin Mutual), 101 John F. Kennedy Parkway, Short Hills, NJ 07078, is the Fund's investment manager.

The Fund is managed by a team of dedicated professionals focused on investments in equity securities they consider to be undervalued. The portfolio managers of the team are as follows:

PETER A. LANGERMAN
Chairman, President and Chief
Executive Officer of Franklin Mutual

Mr. Langerman assumed the duties of lead portfolio manager of the Fund when he rejoined Franklin Templeton Investments in 2005 and became a co-lead portfolio manager in 2007. He joined Franklin Templeton Investments in 1996, serving in various capacities, including President and Chief Executive Officer of Franklin Mutual and member of the management team of the Fund, before leaving in 2002 and serving as director of New Jersey's Division of Investment, overseeing employee pension funds. Between 1986 and 1996, he was employed at Heine Securities Corporation, the predecessor of Franklin Mutual.

F. DAVID SEGAL, CFA
Portfolio Manager of Franklin Mutual

Mr. Segal assumed the duties of co-lead portfolio manager with Mr. Langerman in 2007 and had been a portfolio manager of the Fund since joining Franklin Templeton Investments in 2002. Prior to joining Franklin Templeton Investments in 2002, he was an analyst in the Structured Finance Group of MetLife for the period 1999-2002.

DEBBIE TURNER, CFA
Portfolio Manager of Franklin Mutual

Ms. Turner has been a portfolio manager of the Fund since 2001 and has been with Franklin Templeton Investments since 1996.

As co-lead portfolio managers of the Fund, Mr. Langerman and Mr. Segal have equal authority over all aspects of the Fund's investment portfolio, including but not limited to, purchases and sales of individual securities, portfolio risk assessment, and the management of daily cash balances in accordance with anticipated investment management requirements. The degree to which either may perform these functions, and the nature of these functions, may change from time to time. Ms. Turner provides the Fund with research and advice on the purchases and sales of individual securities, and portfolio risk assessment.

CFA® and Chartered Financial Analyst® are trademarks owned by CFA Institute.

The Fund's SAI provides additional information about portfolio manager compensation, other accounts that they manage and their ownership of Fund shares.

The Fund pays Franklin Mutual a fee for managing the Fund's assets. For fiscal year ended December 31, 2010, the Fund paid 0.60% of its average net assets to the investment manager for its services.

A discussion regarding the basis for the board of trustees approving the investment management contract of the Fund is available in the Fund's semiannual report to shareholders for the six-month period ended June 30.

Financial Highlights

This table presents the financial performance of Class 2 shares for the past five years or since inception. The table shows certain information on a single Fund share basis (per share performance). It also shows some key Fund statistics, such as total return (past performance) and expense ratios. Total return represents the annual change in value of a share assuming reinvestment of dividends and capital gains. This information has been audited by PricewaterhouseCoopers LLP. Their report, along with the Fund's financial statements, is included in the annual report, which is available upon request.

Class 2	Year Ended December 31,				
	2010	2009	2008	2007	2006
Per share operating performance (for a share outstanding throughout the year)					
Net asset value, beginning of year	\$14.58	\$11.78	\$20.19	\$20.46	\$18.18
Income from investment operations: ^a					
Net investment income ^b	0.36 ^f	0.20 ^g	0.32	0.48	0.34
Net realized and unrealized gains (losses)	1.25	2.85	(7.49)	0.31	2.84
Total from investment operations	1.61	3.05	(7.17)	0.79	3.18
Less distributions from:					
Net investment income	(0.24)	(0.25)	(0.51)	(0.31)	(0.25)
Net realized gains	—	—	(0.73)	(0.75)	(0.65)
Total distributions	(0.24)	(0.25)	(1.24)	(1.06)	(0.90)
Net asset value, end of year	\$15.95	\$14.58	\$11.78	\$20.19	\$20.46
Total return ^c	11.19%	26.05%	(37.11%)	3.48%	18.38%
Ratios to average net assets					
Expenses ^{d,e}	0.99%	1.03%	0.98%	0.97%	1.06%
Expenses incurred in connection with securities sold short	0.02%	0.06%	—% ^h	—% ^h	0.07%
Net investment income	2.41% ^f	1.60% ^g	1.91%	2.33%	1.77%
Supplemental data					
Net assets, end of year (000's)	\$4,188,821	\$3,953,435	\$3,303,761	\$5,925,551	\$5,140,878
Portfolio turnover rate	32.05%	49.33%	44.11%	41.73% ⁱ	19.75%

a. The amount shown for a share outstanding throughout the period may not correlate with the Statement of Operations in the annual report for the period due to the timing of sales and repurchases of the Fund shares in relation to income earned and/or fluctuating market value of the investments of the Fund.

b. Based on average daily shares outstanding.

c. Total return does not include fees, charges or expenses imposed by the variable annuity and life insurance contracts for which the Franklin Templeton Variable Insurance Products Trust serves as an underlying investment vehicle.

d. Includes dividend expense on securities sold short and stock loan fees, if any. See below for the ratios of such expenses to average net assets for the periods presented.

e. Benefit of expense reduction rounds to less than 0.01%.

f. Net investment income per share includes approximately \$0.11 per share received in the form of a special dividend paid in connection with a corporate REIT conversion. Excluding this non-recurring amount, the ratio of the net investment income to average net assets would have been 1.68%.

g. Net investment income per share includes approximately \$(0.03) per share related to an adjustment for uncollectible interest. Excluding the effect of this adjustment, the ratio of net investment income to average net assets would have been 1.83%.

h. Rounds to less than 0.01%.

i. Excludes the value of portfolio securities delivered as a result of redemption in-kind.

[THIS PAGE INTENTIONALLY LEFT BLANK]

Additional Information, All Funds

Regulatory Update

In 2003 and 2004, multiple lawsuits were filed against Franklin Resources, Inc., and certain of its investment advisor subsidiaries, among other defendants, alleging violations of federal securities and state laws and seeking, among other relief, monetary damages, restitution, removal of fund trustees, directors, investment managers, administrators and distributors, rescission of management contracts and 12b-1 plans, and/or attorneys' fees and costs. Specifically, the lawsuits claim breach of duty with respect to alleged arrangements to permit market timing and/or late trading activity, or breach of duty with respect to the valuation of the portfolio securities of certain Templeton funds managed by Franklin Resources, Inc. subsidiaries, allegedly resulting in market timing activity. The lawsuits are styled as class actions, or derivative actions on behalf of either the named funds or Franklin Resources, Inc., and have been consolidated for pretrial purposes, along with hundreds of other similar lawsuits against other mutual fund companies. All of the Franklin Templeton Investments mutual funds that were named in the litigation as defendants have since been dismissed, as have the independent trustees to those funds.

Franklin Resources, Inc. previously disclosed these private lawsuits in its regulatory filings and on its public website. Any material updates regarding these matters will be disclosed in Franklin Resources, Inc.'s Form 10-Q or Form 10-K filings with the U.S. Securities and Exchange Commission.

DEALER COMPENSATION

Franklin Templeton Distributors, Inc. (Distributors) and/or its affiliates may provide financial support to securities dealers that sell shares of Franklin Templeton funds, or participate in the offering of variable insurance products that invest in the Trust (VIP Qualifying Dealers); such financial support may be made by payments from Distributors' and/or its affiliates' resources, including from Distributors' retention of underwriting concessions and, in the case of Rule 12b-1 share classes, from payments to Distributors under such plans.

Distributors makes these payments in connection with VIP Qualifying Dealers' efforts to educate financial advisors about our funds. A number of factors will be considered in determining payments, including such dealer's sales, assets and redemption rates, and the

quality of the dealer's relationship with Distributors. Distributors will, on an annual basis, determine the advisability of continuing these payments. To the extent permitted by SEC and FINRA rules and other applicable laws and regulations, Distributors and/or its affiliates may pay or allow other promotional incentives or payments to dealers. Sale of shares of the Funds, as well as shares of other Franklin Templeton funds, is not considered a factor in the selection of securities dealers to execute the Funds' portfolio transactions. Accordingly, the allocation of portfolio transactions for execution by VIP Qualifying Dealers is not considered marketing support payments.

You can find further details in the SAI about the payments made by Distributors and/or its affiliates and the services provided by your VIP Qualifying Dealer. While your insurance company's fees and charges are generally disclosed in the insurance contract prospectus, your VIP Qualifying Dealer may charge you additional fees or commissions other than those disclosed in this prospectus. You can ask your insurance company and VIP Qualifying Dealer for information about any payments they receive from Distributors and/or its affiliates and any services they provide, as well as about fees and/or commissions they charge. These payments and other fees and charges are not reflected in the fee table included in this prospectus. Additional disclosure may be included in the insurance contract prospectus.

PORTFOLIO HOLDINGS

A description of the Trust's policies and procedures regarding the release of portfolio holdings information for each Fund of the Trust (collectively the Fund) is also available in the Trust's SAI. Portfolio holdings information can be viewed online at franklintempleton.com.

STATEMENTS AND REPORTS

Contract Owners should receive financial reports for the Fund related to their Contract from the sponsoring Insurer every six months.

ADMINISTRATIVE SERVICES

Franklin Templeton Services, LLC provides business administration services and facilities for the Fund and makes certain payments (see the SAI for more information) to insurance companies out of its own resources for certain administrative services.

Distributions and Taxes

INCOME AND CAPITAL GAINS DISTRIBUTIONS

Each Fund (sometimes referred to as, “the Fund”) intends to pay income dividends at least annually from its net investment income. Capital gains, if any, may be paid at least annually. The amount of any distribution will vary, and there is no guarantee the Fund will pay either income dividends or capital gain distributions.

TAX CONSIDERATIONS

The Trust consists of multiple Funds each of which for federal income tax purposes is treated separately from any other. Each Fund expects to qualify as a regulated investment company under Subchapter M of the Internal Revenue Code of 1986, as amended (the “Code”). Accordingly, the assets, income and distributions of the Fund are considered separately for purposes of determining whether the Fund qualifies as a regulated investment company. If the Fund so qualifies, it will not be subject to federal income tax on the portion of its income and gains that it distributes to shareholders. Additionally, each Fund intends to comply with the diversification requirements imposed by Section 817(h) of the Code.

For federal income tax purposes, the insurance companies and their separate accounts are treated as the owners of the shares of the Fund selected as an investment option rather than the purchasers of a variable annuity contract or variable life insurance

policy (variable contracts). In light of the tax-favored status of life insurance company separate accounts, there should be no adverse federal income tax consequences to them as a result of their buying, holding, exchanging or selling Fund shares or on their receipt of Fund distributions, subject to applicable limitations under the Code.

Shares of the Fund must be purchased by investors through variable contracts issued by life insurance companies. As a result, it is anticipated that any income dividends or capital gains distributions paid by the Fund will be exempt from current taxation to the purchaser of such variable contracts if left to accumulate within a variable contract. Withdrawals from such contracts may be subject to ordinary income tax plus a 10% penalty tax if made before age 59½. For more information on taxes, please refer to the accompanying prospectus of the annuity or life insurance program for which shares of the Fund are underlying investment options.

Other tax information. This discussion of “Distributions and Taxes” is for general information only and is not tax advice. You should consult your own tax advisor regarding your particular circumstances and about any federal, state or local tax consequences before making an investment in a variable contract or the Fund.

Fund Account Information

Buying Shares

Insurance companies offer variable annuity and variable life insurance products to investors including pension plans (Contracts), through separate accounts (Insurers). When shares of the Fund are investment options of Contracts, separate accounts, and not the owners of the Contracts including group contract and pension plan certificate holders (Contract Owners), are generally the shareholders of the Fund. Shares of the Fund may also be purchased by other mutual funds (funds of funds).

Shares of the Fund are sold at net asset value (NAV). When sold in connection with Contracts, the Fund correspond with the investment options offered by the Insurer to Contract Owners. The board of trustees monitors the Fund for the existence of any material irreconcilable conflicts of interest between different types of their separate account investors. If there were

any such conflicts, the board of trustees will determine what action, if any, shall be taken in response. Please refer to the accompanying contract prospectus for information on how to select the Fund as an investment option.

Contract Owners' payments will be allocated by the insurance company separate account to sub-accounts that purchase shares of the Fund corresponding with the sub-account chosen by the Contract Owner, and are subject to any limits or conditions in the contract. Requests to buy shares are processed at the NAV next calculated after we or our designees receive the request in proper form. Please refer to your Contract prospectus or other disclosure document for further information. The Fund does not issue share certificates.

Selling Shares

An Insurer that holds shares of the Fund in connection with a Contract sells shares of the Fund to make benefit or surrender payments or to execute exchanges

(transfers) between investment options under the terms of the Contract.

Exchanging Shares

Contract Owners may exchange interests in sub-accounts of an insurance company separate account that corresponds with shares of any one class or Fund, for interests in sub-accounts that correspond with shares of other classes or Fund, subject to the terms and any specific limitations on the exchange (or "transfer") privilege described in the Contract prospectus.

Frequent exchanges or excessive trading can harm performance and interfere with Fund portfolio management or operations and increase Fund costs. The Funds discourage short-term or excessive trading and may seek to restrict or reject such trading (please see "Market Timing Trading Policy," below).

Market Timing Trading Policy

The board of trustees has adopted the following policies and procedures with respect to market timing (Market Timing Trading Policy):

Market timing generally. The Fund discourages and does not intend to accommodate short-term or frequent purchases and redemptions of fund shares, often referred to as “market timing,” and asks its Fund of Fund investors and participating Insurers for their cooperation in trying to discourage such activity in their separate accounts by Contract Owners and their financial advisors. The Fund intends to seek to restrict or reject such trading or take other action, as described below, if in the judgment of the Fund manager or transfer agent such trading may interfere with the efficient management of the Fund’s portfolio, may materially increase the Fund’s transaction costs, administrative costs or taxes, or may otherwise be detrimental to the interests of the Fund and its shareholders.

Market timing consequences. If information regarding trading activity in the Fund or in any other Franklin Templeton fund or non-Franklin Templeton fund is brought to the attention of the Fund’s manager or transfer agent and based on that information the Fund or its manager or transfer agent in their sole discretion conclude that such trading may be detrimental to the Fund as described in this Market Timing Trading Policy, the Fund may temporarily or permanently bar future purchases into the Fund or, alternatively, may limit the amount, number or frequency of any future purchases and/or the method by which an Insurer or a Fund of Funds may request future purchases and redemptions (including purchases and/or redemptions by an exchange or transfer between the Fund and any other mutual fund).

In considering trading activity, the Fund may consider, among other factors, trading history both directly and, if known, through financial intermediaries, in the Fund, in other Franklin Templeton funds, in non-Franklin Templeton mutual funds, or in accounts under common control or ownership.

Market timing through Insurers. *As a Contract Owner you are also subject to this policy.* An Insurer’s order for purchases and/or redemptions pursuant to a Contract Owner’s instructions (including purchases and/or redemptions by an exchange or transfer between the Fund and any mutual fund) are submitted pursuant to aggregated orders (Aggregated Orders). A fund of fund’s order for purchases and/or redemptions pursuant to its investors’ instructions are also submitted pursuant to Aggregated Orders. While the Fund will encourage Insurers and funds of funds to apply the Fund’s Market Timing Trading Policy to their investors, the Fund is limited in its ability to monitor the trading activity or enforce the Fund’s Market Timing Trading Policy because Insurers and funds of funds have the relationships with, and are responsible for maintaining the account records of, the individual investors. For example, should it occur, the Fund may not be able to detect market timing that may be facilitated by financial intermediaries or made difficult to identify in the Aggregated Orders used by Insurers and Fund of Fund investors.

Therefore, the Fund or its agent selectively monitor the Aggregated Orders used by Insurers and Fund of Fund investors for purchases, exchanges and redemptions in respect of all their investors and seek the cooperation of Insurers and Fund of Fund investors to apply the Fund’s Market Timing Trading Policy. There may be legal and technological limitations on the ability of an Insurer or Fund of Fund to impose trading restrictions and to apply the Fund’s Market Timing Trading Policy to their investors through such methods as implementing short-term trading limitations or restrictions, assessing the Fund’s redemption fee (if applicable) and monitoring trading activity for what might be market timing. As a result, the Fund may not be able to determine whether trading by Insurers or funds of funds in respect of their investors is contrary to the Fund’s Market Timing Trading Policy.

Risks from market timers. Depending on various factors, including the size of the Fund, the amount of assets the portfolio manager typically maintains in cash or cash equivalents and the dollar amount

and number and frequency of trades and the types of securities in which the Fund typically invests, short-term or frequent trading may interfere with the efficient management of the Fund's portfolio, increase the Fund's transaction costs, administrative costs and taxes and/or impact Fund performance.

In addition, if the nature of the Fund's portfolio holdings exposes the Fund to "arbitrage market timers," the value of the Fund's shares may be diluted if redeeming shareholders receive proceeds (and buying shareholders receive shares) based upon net asset values which do not reflect appropriate fair value prices. Arbitrage market timing occurs when an investor seeks to take advantage of the possible delay between the change in the value of a mutual fund's portfolio holdings and the reflection of the change in the fund's net asset value per share. A fund that invests significantly in foreign securities may be particularly vulnerable to arbitrage market timing. Arbitrage market timing in foreign investments may occur because of time zone differences between the foreign markets on which the Fund's international portfolio securities trade and the time as of which the Fund's NAV is calculated. Arbitrage market timers may purchase shares of the Fund based on events occurring after foreign market closing prices are established, but before calculation of the Fund's NAV. One of the objectives of the Trust's fair value pricing procedures is to minimize the possibilities of this type of arbitrage market timing (please see "Valuation - Foreign Securities – Potential Impact of Time Zones and Market Holidays").

Since the Fund may invest significantly in securities that are, or may be, restricted, unlisted, traded infrequently, thinly traded, or relatively illiquid (relatively illiquid securities), the Fund may be particularly vulnerable to arbitrage market timing. An arbitrage market timer may seek to take advantage of a possible differential between the last available market prices for one or more of these relatively illiquid securities that are used to calculate the Fund's net asset value and the latest indications of market values for those securities. One of the objectives of

the Fund's fair value pricing procedures is to minimize the possibilities of this type of arbitrage market timing (please see "Fair Valuation – Individual Securities" under the heading "Fund Account Policies", below).

The Fund is currently using several methods to reduce the risk of market timing. These methods include:

- seeking the cooperation of Insurers and funds of funds to assist the Fund in identifying potential market timing activity;
- committing staff to selectively review on a continuing basis recent trading activity in order to identify trading activity that may be contrary to the Fund's Market Timing Trading Policy;
- monitoring potential price differentials following the close of trading in foreign markets to determine whether the application of fair value pricing procedures is warranted; and
- seeking the cooperation of financial intermediaries to assist the Fund in identifying market timing activity.

Though these methods involve judgments that are inherently subjective and involve some selectivity in their application, the Fund seeks to make judgments and applications that are consistent with the interests of the Fund's shareholders. There is no assurance that the Fund or its agents will gain access to any or all information necessary to detect market timing in Insurers' separate accounts. While the Fund will seek to take actions (directly and with the assistance of Insurers) that will detect market timing, it cannot represent that such trading activity can be minimized or completely eliminated.

Revocation of market timing trades. Transactions placed in violation of a Fund's Market Timing Trading Policy or exchange limit guidelines are not necessarily deemed accepted by the Fund and may be cancelled or revoked by the Fund, in full or in part, as soon as practicable following receipt by the Fund and prompt inquiry of the intermediary.

Involuntary Redemptions

The Fund reserves the right to close an account (and involuntarily redeem any investment) if it is deemed to have engaged in activities that are illegal (such as late trading) or otherwise believed to be detrimental to the Fund (such as market timing), to the fullest extent permitted by law and consistent with the best interests of the Fund and its shareholders. Thus, for

example, if upon inquiry the Fund and insurance company identify a contract owner that has engaged in late trading or market timing activities, the Fund may advise the insurance company that it will not accept future investments, or is redeeming any investment related to that contract owner. Involuntary redemptions may be in cash or in kind.

Fund Account Policies

CALCULATING SHARE PRICE

When they buy and sell shares, the Fund's shareholders pay and receive the net asset value (NAV) per share.

The value of a mutual fund is determined by deducting the fund's liabilities from the total assets of the portfolio. The NAV per share of a class of the Fund is determined by dividing the net asset value of the Fund's share class by the applicable number of shares outstanding of that share class. The Fund's NAV does not include any fee or sales charge imposed by variable insurance contracts for which the Fund is an investment option or funds of funds that purchase shares of the Fund. Investors should consult the contract prospectus, disclosure document or Fund of Funds prospectus for more information.

The Fund calculates the NAV per share each business day at the close of trading on the New York Stock Exchange (NYSE) (normally 1:00 p.m. Pacific time). The Fund does not calculate NAV on days the NYSE is closed for trading, which include New Year's Day, Martin Luther King Jr. Day, President's Day, Good Friday, Memorial Day, Independence Day, Labor Day, Thanksgiving Day and Christmas Day. The Franklin Templeton VIP Founding Fund Allocation Fund calculates its NAV using the NAV calculations of the funds in which it invests.

When determining the NAV, the Fund values cash and receivables at their realizable amounts, and records interest as accrued and dividends on the ex-dividend date. The Fund generally utilizes two independent

pricing services to assist in determining a current market value for each security. If market quotations are readily available for portfolio securities listed on a securities exchange, the Fund values those securities at the last quoted sale price or the official closing price of the day, respectively, or, if there is no reported sale, within the range of the most recent quoted bid and ask prices. The Fund values over-the-counter portfolio securities within the range of the most recent bid and ask prices. If portfolio securities trade both in the over-the-counter market and on a stock exchange, the Fund values them according to the broadest and most representative market.

Generally, trading in corporate bonds, U.S. government securities and money market instruments is substantially completed each day at various times before the close of the NYSE. The value of these securities used in computing the NAV is determined as of such times. Occasionally, events affecting the values of these securities may occur between the times at which they are determined and the close of the NYSE that will not be reflected in the computation of the NAV. The Fund relies on third party pricing vendors to monitor for events materially affecting the value of these securities during this period. If an event occurs, the third party pricing vendors will provide revised values to the Fund.

FAIR VALUATION - INDIVIDUAL SECURITIES

Since the Fund may invest in securities that are restricted, unlisted, traded infrequently, thinly traded, or relatively illiquid, there is the possibility of a

differential between the last available market prices for one or more of those securities and the latest indications of market values for those securities. The Fund has procedures, approved by the board of trustees, to determine the fair value of individual securities and other assets for which market prices are not readily available (such as certain restricted or unlisted securities and private placements) or which may not be reliably priced (such as in the case of trade suspensions or halts, price movement limits set by certain foreign markets, and thinly traded or illiquid securities). Some methods for valuing these securities may include: fundamental analysis (earnings multiple, etc.), matrix pricing, discounts from market prices of similar securities, or discounts applied due to the nature and duration of restrictions on the disposition of the securities. The board of trustees oversees the application of fair value pricing procedures.

The application of fair value pricing procedures represents a good faith determination based upon specifically applied procedures. There can be no assurance that the Funds could obtain the fair value assigned to a security if they were able to sell the security at approximately the time at which a Fund determines its NAV per share.

SECURITY VALUATION - U.S. PASS-THROUGH SECURITIES, CMO, ABS, MBS

Mortgage pass-through securities (such as Ginnie Mae, Fannie Mae and Freddie Mac), other mortgage-backed securities (MBS), collateralized mortgage obligations (CMOs) and asset-backed securities (ABS), generally trade in the over-the-counter market rather than on a securities exchange. The Fund may value these portfolio securities by utilizing quotations from bond dealers, information with respect to bond and note transactions and may rely on independent pricing services. The Fund's pricing services use valuation models or matrix pricing to determine current value. In general, they use information with respect to comparable bond and note transactions, quotations from bond dealers or by reference to other securities that are considered comparable in such characteristics as rating, interest rate, maturity date, option adjusted spread models, prepayment projections, interest rate spreads and yield curves. Matrix pricing is considered a form of fair value pricing.

SECURITY VALUATION - CORPORATE DEBT SECURITIES

Corporate debt securities generally trade in the over-the-counter market rather than on a securities exchange. The Fund may value these portfolio securities by utilizing quotations from bond dealers, information with respect to bond and note transactions and may rely on independent pricing services to assist in determining a current market value for each security. The Fund's pricing services uses independent quotations from bond dealers and bond market activity to determine current value.

SECURITY VALUATION - SENIOR SECURED CORPORATE LOANS

Senior secured corporate loans with floating or variable interest rates generally trade in the over-the-counter market rather than on a securities exchange. The Fund may value these portfolio securities by utilizing quotations from loan dealers and other financial institutions, information with respect to bond and note transactions and may rely on independent pricing services to assist in determining a current market value for each security. These pricing services may utilize independent market quotations from loan dealers or financial institutions and may incorporate valuation methodologies that incorporate multiple bond characteristics. These characteristics may include dealer quotes, issuer type, coupon, maturity, weighted average maturity, interest rate spreads and yield curves, cash flow and credit risk/quality analysis.

SECURITY VALUATION - MUNICIPAL SECURITIES - MATRIX PRICING (FAIR VALUATION)

Municipal securities generally trade in the over-the-counter market rather than on a securities exchange. The Fund's pricing services use valuation models or matrix pricing to determine current value. In general, they use information with respect to comparable bond and note transactions, quotations from bond dealers or by reference to other securities that are considered comparable in such characteristics as rating, interest rate and maturity date. Matrix pricing is considered a form of fair value pricing.

SECURITY VALUATION - OPTIONS

The Fund values portfolio securities underlying actively traded call options at their market price as determined above. The current market value of any

option the Fund holds is its last sale price on the relevant exchange before the Fund values its assets. If there are no sales that day or if the last sale price is outside the bid and ask prices, the Fund values options within the range of the current closing bid and ask prices if the Fund believes the valuation fairly reflects the contract's market value.

VALUATION - FOREIGN SECURITIES - COMPUTATION OF U.S. EQUIVALENT VALUE

The Fund generally determines the value of a foreign security as of the close of trading on the foreign stock exchange on which the security is primarily traded, or as of the close of trading on the NYSE, if earlier. The value is then converted into its U.S. dollar equivalent at the foreign exchange rate in effect at the close of the NYSE (generally 1:00 p.m. Pacific time) on the day that the value of the foreign security is determined. If no sale is reported at that time, the foreign security will be valued within the range of the most recent quoted bid and ask prices. Occasionally events (such as repatriation limits or restrictions) may impact the availability or reliability of foreign exchange rates used to convert the U.S. dollar equivalent value. If such an event occurs, the foreign exchange rate will be valued at fair value using procedures established and approved by the board of trustees.

VALUATION - FOREIGN SECURITIES - POTENTIAL IMPACT OF TIME ZONES AND MARKET HOLIDAYS

Trading in securities on foreign securities stock exchanges and over-the-counter markets, such as those in Europe and Asia, may be completed well before the close of business on the NYSE on each day that the NYSE is open. Occasionally, events occur between the time at which trading in a foreign security is completed and the close of the NYSE that might call into question the availability (including the reliability) of the value of a foreign portfolio security held by the Fund. As a result, the Fund may be susceptible to what is referred to as "time zone arbitrage." Certain investors in the Fund may seek to take advantage of discrepancies in the value of the Fund's portfolio securities as determined by the foreign market at its close and the latest indications of value attributable to the portfolio securities at the time the Fund's NAV is computed. Trading by these investors, often referred to as "arbitrage market timers," may dilute the value of the Fund's shares, if such discrepancies in

security values actually exist. To attempt to minimize the possibilities for time zone arbitrage, and in accordance with procedures established and approved by the board of trustees, the managers monitor price movements following the close of trading in foreign stock markets through a series of country specific market proxies (such as baskets of American Depositary Receipts (ADRs), futures contracts and exchange traded funds).

These price movements are measured against established trigger thresholds for each specific market proxy to assist in determining if an event has occurred that might call into question the availability (including the reliability) of the values of foreign securities between the times at which they are determined and the close of the NYSE. If such an event occurs, the foreign securities may be valued using fair value procedures established and approved by the board of trustees. In certain circumstances these procedures include the use of independent pricing services. The intended effect of applying fair value pricing is to compute an NAV that accurately reflects the value of a Fund's portfolio at the time that the NAV is calculated, to discourage potential arbitrage market timing in Fund shares, to mitigate the dilutive impact of such attempted arbitrage market timing and to be fair to purchasing, redeeming and existing shareholders. However, the application of fair value pricing procedures may, on occasion, worsen rather than mitigate the potential dilutive impact of shareholder trading.

In addition, trading in foreign portfolio securities generally, or in securities markets in a particular country or countries, may not take place on every NYSE business day. Furthermore, trading takes place in various foreign markets on days that are not business days for the NYSE, and on which the Fund's NAV is not calculated. Thus, the calculation of the Fund's NAV does not take place contemporaneously with the determination of the prices of many of the foreign portfolio securities used in the calculation. If events affecting the last determined values of these foreign securities occur (determined through the monitoring process described above), the securities will be valued at fair value determined in good faith in accordance with the Fund's fair value procedures established and approved by the board of trustees.

SHARE CLASSES

Class 1, Class 2, Class 3 and Class 4 shares of the Funds are identical except that Class 2, Class 3 and Class 4 each have a distribution plan or “rule 12b-1” plan, as described below for Class 2 shares and in their respective prospectuses for Class 3 and Class 4 shares. Class 3 shares may assess a 1.00% redemption fee, as described in the prospectuses for Class 3 shares.

Distribution and service (12b-1) fees. Class 2 has a distribution plan, sometimes known as a rule 12b-1 plan, that allows the Fund to pay distribution fees to those who sell and distribute Class 2 shares and provide services to shareholders and Contract Owners. Because these fees are paid out of Class 2’s assets on an on-going basis, over time these fees will increase the cost of an investment, and may cost you more than paying other types of sales charges. While the maximum amount payable under most Funds’ Class 2 rule 12b-1 plan is 0.35% per year of the Fund’s Class 2 average daily net assets, the board of trustees has set the current rate at 0.25%. However, Franklin Strategic Income Securities Fund, Templeton Developing Markets Securities Fund, Templeton Foreign Securities Fund and Templeton Global Bond Securities Fund each have a maximum rule 12b-1 plan fee of 0.25% per year. A portion of the fees payable to Franklin Templeton Distributors, Inc. (Distributors) or others under the rule 12b-1 plan may be retained by Distributors for distribution expenses.

Subject to applicable law, the board of trustees may from time to time, without the approval, vote or consent of shareholders of the Fund or any class, combine, merge or otherwise consolidate the shares of two or more classes of shares of the Fund with and/or into a single class of shares of the Fund, with such designation, preference, conversion or other rights, voting powers, restrictions, limitations as to dividends, qualifications, terms and conditions of redemption

and other characteristics as the board of trustees may determine. Such transactions may be effected through share-for-share exchanges, transfers or sales of assets, shareholder in-kind redemptions and purchases, exchange offers, or any other method approved by the board of trustees.

ADDITIONAL POLICIES

Please note that the Fund maintains additional policies and reserves certain rights, including:

- The Fund may restrict, reject or cancel any purchase orders, including an exchange request.
- At any time, the Fund may establish or change investment minimums.
- The Fund may make material changes to or discontinue the exchange privilege on 60 days’ notice to insurance company or Fund of Fund shareholders, or as otherwise provided by law.
- Purchases of shares of the Fund (including the purchase side of an exchange) may be made only when such shares are eligible for sale in the appropriate state or jurisdiction.
- In unusual circumstances, we may temporarily suspend redemptions or postpone the payment of proceeds, as allowed by federal securities laws.
- For redemptions over a certain amount, the Fund may pay redemption proceeds in securities or other assets rather than cash if the investment manager determines it is in the best interest of the Fund, consistent with applicable law.
- To permit their investors to obtain the current price, participating insurance companies and funds of funds are responsible for transmitting all orders to the Fund promptly.

Questions

More detailed information about the Trust and the Fund’s account policies can be found in the Fund’s SAI. If you have any questions about the Fund, you can write to us at One Franklin Parkway, P.O. Box

7777, San Mateo, CA 94403-7777. You can also call us at 1-800/362-6243 (a toll-free number). For your protection and to help ensure we provide you with quality service, all calls may be monitored or recorded.

[THIS PAGE INTENTIONALLY LEFT BLANK]



FRANKLIN TEMPLETON
INVESTMENTS

< GAIN FROM OUR PERSPECTIVE® >

FOR MORE INFORMATION

For information on the Fund, including a free copy of the Fund's prospectus and Statement of Additional Information, and the Fund's Annual and Semiannual Reports, contact your financial advisor or the insurance company offering your Contract.

Shares of the insurance funds of Franklin Templeton Variable Insurance Products Trust (FTVIPT) are not offered to the public; they are offered and sold only to: (1) insurance company separate accounts to serve as the underlying investment vehicles for variable contracts; (2) certain qualified plans; and (3) other mutual funds (funds of funds).

Not all Funds and classes are available in all Contracts. For information on the terms of investment in a Contract, please consult the Contract prospectus that accompanies this Fund prospectus.

You can learn more about the Fund in the following documents:

Annual/Semiannual Fund Reports to Shareholders

Include a discussion of recent market conditions and Fund strategies that significantly affected Fund performance during its last fiscal year, financial statements, detailed performance information, portfolio holdings and, in the annual report only, the Independent Registered Public Accounting Firm's report.

Statement of Additional Information (SAI)

Contains more information about the Fund, its investments, policies, and risks. It is incorporated by reference into (is legally a part of) this prospectus.

You also can obtain information about the Funds by visiting the SEC's Public Reference Room in Washington, DC (phone 1-202/551-8090) or the EDGAR Database on the SEC's Internet site at <http://www.sec.gov>. You can obtain copies of this information, after paying a duplicating fee, by writing to the SEC's Public Reference Section, 100 F Street, N.W., Washington, DC 20549-0102 or by electronic request at the following email address: publicinfo@sec.gov.